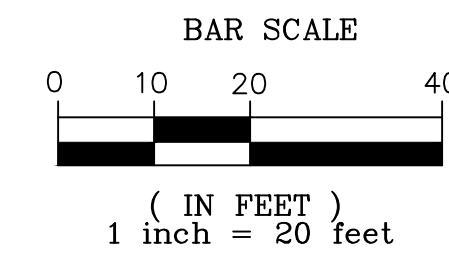
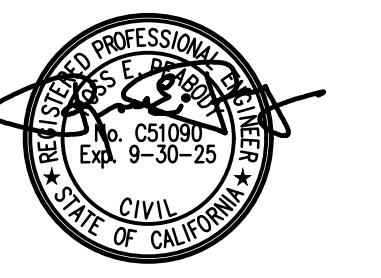


PC Exhibit N

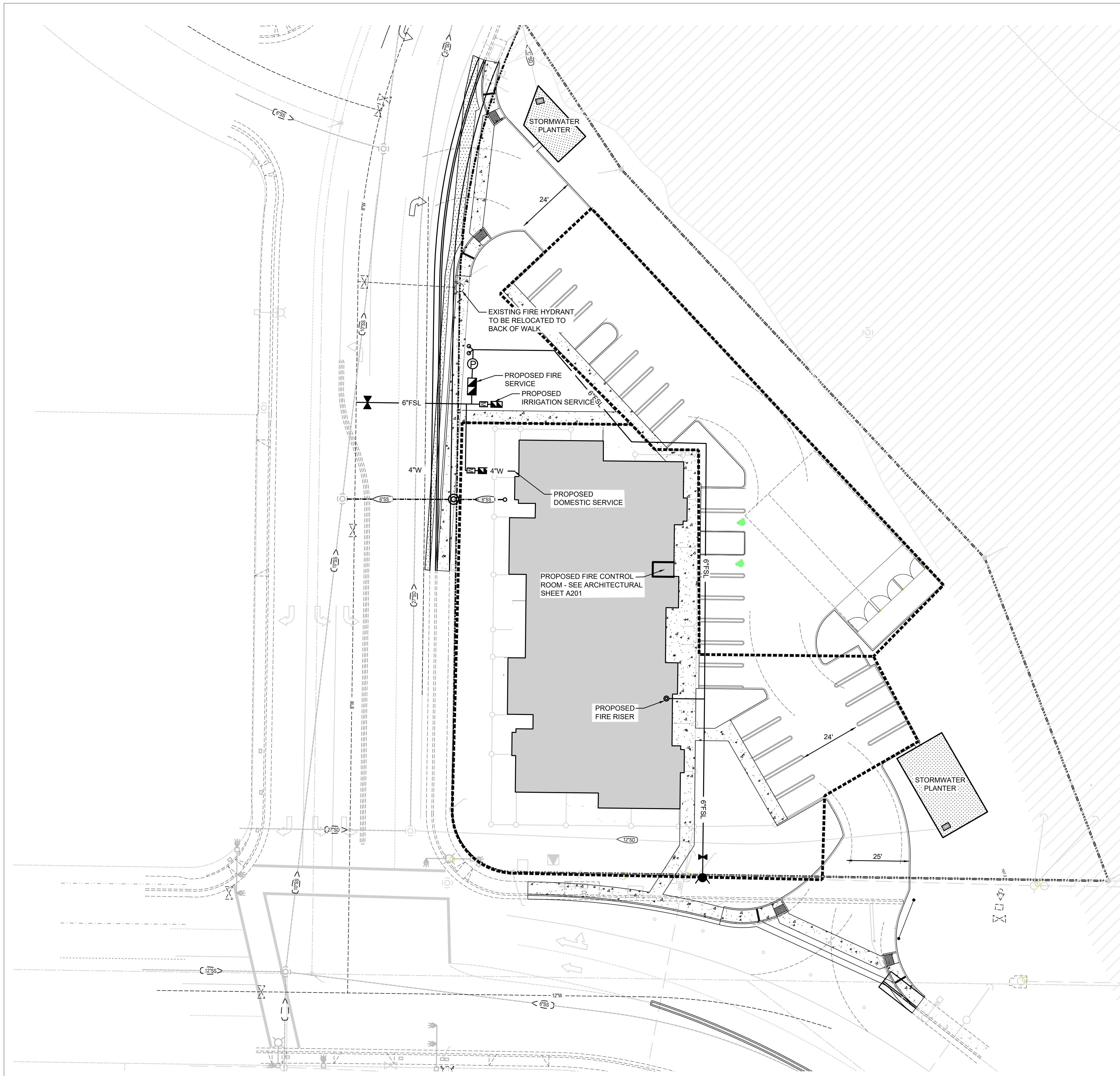


NOTE: EMERGENCY VEHICLE ACCESS SHALL BE DESIGNED PER CITY OF ROSEVILLE FIRE DEPARTMENT FIRE & LIFE SAFETY STANDARDS.

LEGEND:

PROPOSED	EXISTING
SEWER MANHOLE	SEWER MANHOLE
SEWER LINE	SEWER LINE
STORM DRAIN DRAIN INLET	STORM DRAIN DRAIN INLET
WATER LINE	WATER LINE

FIRE TURN RADIUS (30' INNER, 50' OUTER)



PRELIMINARY UTILITY PLAN
SCALE: 1"= 20'

CLIENT

PROJECT TITLE
Rocky Ridge
Apartments

1995 ROCKY RIDGE DR.
ROSEVILLE
CALIFORNIA

SHEET TITLE
**PRELIMINARY
UTILITY PLAN**

DELTA	REVISION	DATE

DRAWN/CHK BY: MT / RP
DATE: 4/28/2025
JOB NO.: 0420.006

SHEET NUMBER

U.1